

Bellerive

Located along the Spokane River, Bellerive is a mixed-use development organized along 4,500 linear feet of riverfront. A mixed use building supports the residences with retail and recreational amenities. Boat slips line the boardwalk which provides public access to the homes as well.

Stacked flats and townhomes orient to views of the river and shoreline beyond. Upper level homes offer lofts with soaring, curved ceilings



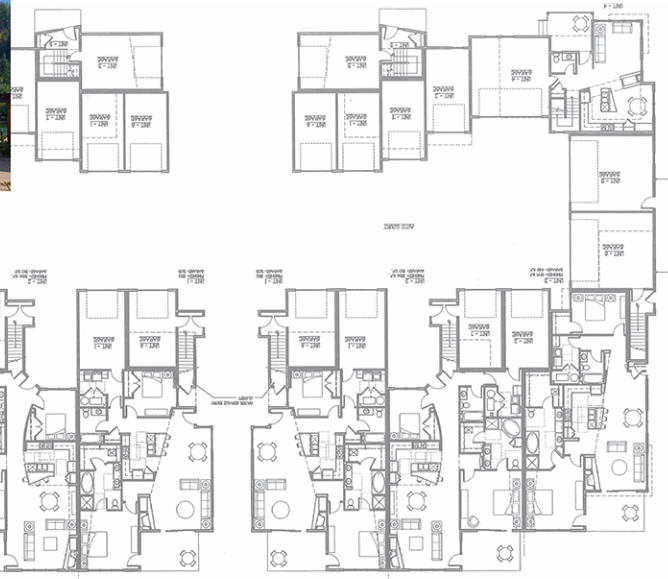
Client
Blackrock Development

Project Data
24 Acres

Location
Coeur d'Alene, Idaho

14 Townhomes

1,200 sf - 1,850 sf



This work represents previous experience completed as Director of Residential Architecture for DTJ Design, Inc.



simplemindstudios LLC
www.simplemindstudios.com